



# Sublimed

In the midst of a high-paced and "glaring" environment, we aspire to peace and harmony. A calm palette of light pastels, tinged luminous whites, beiges and pale greens, extending to silvery or subtly pinkish grays. Textures go from satin to softly shiny, sequined or illuminated with pearlescent reflections.



Otago 2525  
YW263I



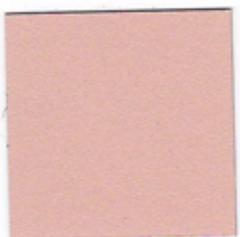
Shilin 2525  
YW213G



Grazalema 2525  
YW266F



Faro 2525  
YW268F



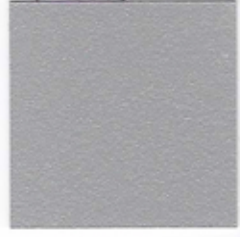
Atacama 2525 Sablé  
YW385I



Sonora 2525 Sablé  
YW379I



Gris 2800 Sablé  
YW356F



Gris 2150 Sablé  
YW365F



Kura 2525  
YW265I



Yazd 2525 Sablé  
YW370F



Silver 2525  
YW206F



Pyrite 2525  
YW207F



The codes on this card relate to the **Interpon D2525** series superdurable version of the shades. Colors indicative only. Actual product may differ slightly. Please request a sample.



## Bold Energy

Focus on the spectacular, boldly asserting one's identity to create strong sensations and stand out in a chaotic and complex world.

The palette is composed of bright high-energy tones: acid yellow and deep green, intense reds and blues, to pair with colored dark shades. Textures are lacquered, shiny or satiny, sequined or metallic, all the way to mirror reflections.

## Explosive

In a move to counter the ambient moroseness and rigor, all out splendor and ostentation come forth, making way for a flamboyant and uninhibited modernity.

The palette pivots on metals: gold, brass, bronze, petrol black and copper, in intense shimmers and shot reflections. Textures are precious, from satiny to lustrous, or as shiny as mirrors.



Mangalia 2525  
YW269F



Bromo 2525  
YW269I



Ambre 2525 Sablé  
Y2316F



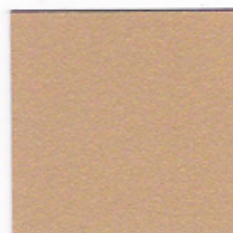
Gondar 2525  
YW106I



Tikal 2525  
YW261I



Canon 2525  
YW279F



Yuma 2525 Sablé  
Y2317F



Jaisalmer 2525  
YW273F



Venezia 2525  
YW004I



Sinope 2525  
YW264I



Ordos 2525 Sablé  
YW387I



Patah 2525  
YW267I



Noir 2100 Sablé  
YW359F



Kapalāi 2525  
YW262I



Bronze 2525  
YW283F



Manganèse 2525  
YW280F





# Ex Natura

We seek to reinvent Nature, both to better preserve it and take advantage of its virtues, in order to progress towards a more hedonistic vision of sustainability.

The palette of dense and pigmentary tones centers on amber-y caramels, burnt reds and burgundies, chocolate browns and khaki greens, inspired by natural ingredients. Textures are satiny or ultra-glossy, matte or sanded.



Rouge 2100 Sablé  
YW371F



Orange 2100 Sablé  
YW386I



Mars 2525 Sablé  
YX355F



Rouge 2200 Sablé  
YX310I



Himba 2525  
YW274F



Rouge 2600 Sablé  
YW380I



Vert 2500 Sablé  
YW354F



Noir 2200 Sablé  
YW360F



Noir 2300 Sablé  
YW383I



Harmattan 2525  
YW003I



Vert 2100 Sablé  
YW381I



Brun 2650 Sablé  
YW366F



Platine 2525  
YW284F



Visit your local Interpon website for further information or scan to order samples



## Soft Industry

As everyday life becomes increasingly virtual and abstract, we aspire to re-humanize our environment through materials and ingredients that have added texture and convey a sense of history.

The palette is made of low-key, gently faded or subtly grayed nuances: beiges, dusty pink, patinated ocher, denim blues and eucalyptus green, khaki brown and charcoal gray, the new colored neutral tones. Textures go from matte to satiny, as if worn down and aged by time or the elements.



Etna 2525  
YW107I



Starlight 2525 Sablé  
YX353F



Bleu 2600 Sablé  
YW361F



Bleu 2700 Sablé  
YW353F



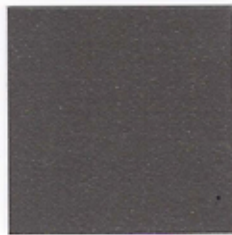
Valparaiso 2525  
YW285G



Cappadoce 2525  
YW268I



Senoual 2525  
YW266I



Gris 2700 Sablé  
YW382I



San Francisco 2525  
YW277F



Vert 2300 Sablé  
YW362F



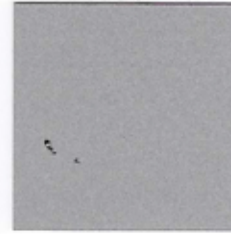
Gris 2400 Sablé  
YW373F



Gris 2500 Sablé  
YW358F



Gris 2900 Sablé  
YW355F



Galet 2525  
YX050F

For more information or to request a sample speak to your local representative or visit [www.interpon.com](http://www.interpon.com)

